



Dixon® MannTek Dry Gas Couplings

Applications

- Primary application is in the handling of LPG - Propane and Butane
- Designed for loading and discharge of bobtails or intermediate bulk delivery trucks to and from rail cars

Features

- Reliable, easy to maintain
- Minimizes the risk of cold burns, spillage, product loss, and health risks and keeps the environment free of hazardous vapors and liquids
- Compatible with existing dry disconnect couplings
- Composite (Polyeten PE-HD 300) plug provides good protection in harsh environments
- For pressure relief options, contact Dixon

Materials

- Stainless steel and brass / gunmetal (produced to U.S. government bronze specification G)
- Low temperature FKM (FPM) seals

Specifications

- Working pressure: **360 PSI** at ambient temperature **70°F (21°C)**
- Can be coupled to a tank unit with pressures up to **225 PSI** at ambient temperature **70°F (21°C)**, if pressure is higher, equip couplings with pressure relief valves



Coupler x Female NPT

Female NPT	Body Size	316 Stainless Steel Part #
1"	56 mm	DGC100SS
2"	71 mm	DGC200SS
3"	119 mm	DGC300SS



Dust Plug for Couplers

Size	Body Size	Polyeten PE-HD 300 Part #
1"	56 mm	DGDP100
2"	71 mm	DGDP200
3"	119 mm	DGDP300



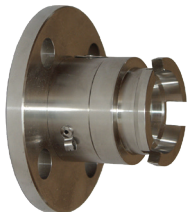
Adapter x Female NPT

Female NPT	Body Size	316 Stainless Steel Part #
1"	56 mm	DGA100SS
2"	71 mm	DGA200SS
3"	119 mm	DGA300SS



Adapter x Female ACME

Female ACME	Body Size	316 Stainless Steel Part #
1-3/4"	56 mm	DGA100SS175
3-1/4"	71 mm	DGA200SS325



Adapter-Tank Unit x 150# ASA Flange

150# Flange	Body Size	316 Stainless Steel Part #
1"	56 mm	DGA100SSFL
2"	71 mm	DGA200SSFL
3"	119 mm	DGA300SSFL

NOTE: For flange dimensions, diagrams, and additional information, please reference dixonvalve.com.

Dust Cap for Adapters



Body Size	Material	Part #
56 mm	polyeten PE-HD300	DGDC100
71 mm	rubber	DGDC200
119 mm	rubber	DGDC300

NOTE: Refer to body size when selecting a cap.